

GEOGRAPHIC INFORMATION SYSTEMS SERVICES

Sterling Environmental Engineering, P.C. (STERLING) provides a wide range of **GEOGRAPHIC INFORMATION SYSTEMS (GIS) SERVICES**. The world of information systems is ever-changing and STERLING is meeting its clients' planning, engineering and permitting needs with the use of GIS technology. GIS can provide our clients from local, private, state and federal institutions with a link to geographically referenced mapping tools.

GIS allows STERLING to view, analyze, interpret and visualize data in a timely manner, at a lower cost to our clients, and improve economic returns. GIS technology can reveal relationships, patterns and trends beneficial to project related decisions and/or goals.



Town of Windham, NY Land Use Map for a GEIS.

STERLING understands that land base information is an important component to municipalities, counties and local and state agencies. Land base maps with GIS data are often the key to making early project decisions. The compilation, creation and enhancement of land base data is useful in determining development needs, constraints and objectives. STERLING provides experience and techniques to collect, standardize, prepare and present planimetric data for land base maps.

REPRESENTATIVE SERVICES:

- Needs Assessment
 - Environmental Constraint and Build-Out Analyses
 - Cartographic Mapping
 - Land Use Analysis
 - Water, Stormwater & Sewer Infrastructure Mapping
 - Watershed & Hydrology Analyses (including the use of HydroCAD)
 - Natural Resource Inventories, Analysis & Mapping
 - Data Conversion & Geo-Database Design
 - Threatened and Endangered Species Assessment
 - Land Development Support
 - Feasibility Studies and Identification of Required Permits
 - NYSDEC/USACOE Permitting Support
 - Environmental Impact Statements (EIS)
 - Wetland Identification, Delineation, Classification and Mitigation
 - GPS Data Collection and Mapping
 - Hazardous Material Inventory
 - Litigation Support and Expert Services
-

With the help of ESRI ArcGIS software, STERLING provides clients with ways to make maximum use of and manage their assets, such as utility infrastructure, more efficiently. STERLING also provides clients with interactive GIS maps for use as a planning tool.

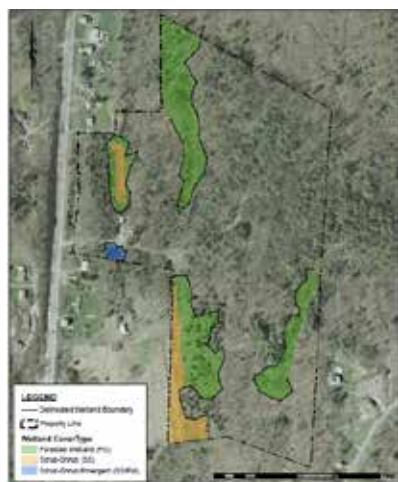
GEOGRAPHIC INFORMATION SYSTEMS SERVICES

STERLING is experienced with obtaining data from federal, state and local agencies and utilizing Global Positioning System (GPS) equipment to provide project support. STERLING is able to create new GIS data or update existing data and convert into useful spatial maps. STERLING integrates AutoCAD and GPS data into GIS projects and vice versa.

STERLING provides GIS services to a wide variety of clients, including municipalities, state agencies, private land developers, commercial and industrial businesses, and individual homeowners.

PROJECT EXPERIENCE:

- Environmental Constraint and Build-Out Analyses for Development Projects
- Land Development GIS Support
- Land Use Analysis for EIS
- Watershed Analyses for Stream/Wetland Restoration Projects
- Natural Resource Inventories, Analysis & Mapping for Ecological Assessments
- Wetland Identification, Delineation, Classification and Mitigation for State and Federal Enforcement Cases and Permitting



Vegetation covertype mapping with GPS & AutoCAD support.



Utility mapping for the Town of Windham.



Soils mapping with NRCS data & AutoCAD support.

STERLING's Environmental Consultants have extensive training in Environmental Systems Research Institute (ESRI) ArcGIS software. STERLING uses the industry standard software to effectively and efficiently create GIS solutions for your business needs.

CONTACT INFORMATION:

24 Wade Road, Latham, NY 12110
Tel: (518) 456-4900 Fax: (518) 456-3532
E-mail: [Sterling@sterlingenvironmental.com](mailto: Sterling@sterlingenvironmental.com)
Website: www.sterlingenvironmental.com

